

SYMBOLS KEY		
	ETC Source 4 10 Degree	2/2
	ETC Source 4 19 Degree	10/17
	ETC Source 4 26 Degree	44/47
	ETC Source 4 36 Degree	29/36
	Par WFL	18/47
	VL 1000	2/2
	ETC Revolution	2/3
	ETC Selador	12/12
	GLP 4Sx	2/2
	High End Studio Beam	2/2
	High End X-Spot	2/2
	Colortran 30 Degree	2/2
	Colortran Zoom	2/2
	Selecon (Dance) Fresnel	2/2
	Altman Sky CYC Cell	6/6
	Side Arm	
	Top Hat	
	Chroma Q Scroller (Rock and Roll Scroll)	
	Apollo Scroller (Stomp Scroll)	
	Wybron Forerunner Scroller (Wybron 2 Scroll)	

**NOTES**

- All lights are on 18" centers unless otherwise noted
- Practicals are TBD with scenic and lighting designer
- Mirror Ball placement is still TBD
- Trim may be adjusted in space
- Please confirm circuiting with design, she can add two-fers as needed
- All gobos are A Size
- Revolutions need shutter module and three matching gobos

Color	Accessory	Unit Number	Trim	Channel
1	2	3	4	5

This drawing represents a lighting design that is wholly owned by the designer. Any use or distribution of the drawing without explicit permission by designer is prohibited and is a violation of copyright laws in the United States of America and internationally. Any unauthorized distribution or use will result in legal action on behalf of the designer.

This drawing represents visual concepts and suggested construction and future placement only. It does not replace the knowledge and advice of a licensed structural engineer. The Designer is disclaimed to determine the structural or electrical appropriateness of this design, and will not assume responsibility for improved engineering, correct handling, or use. All materials and construction must comply with the most stringent applicable Federal and Local Fire, Safety, Energy, and Environmental Codes.

**Tori Mays** Lighting Design

**SISTER ACT**

Music by Alan Menken    Lyrics by Glenn Slater    Book by Cheryl Shickelshover & Bill Steinkamp

Produced By: Arizona Repertory Theatre		
Director Jenny Lang	Christie Kerr	
Production Manager Jason Jamerson	Jason Jamerson	
Scenic Designer Ryan Moore	Ryan Moore	
Costume Designer Tori Mays	Tori Mays	
Lighting Designer Matt Marcus	Matt Marcus	
Sound Designer Kylie Jo Soto	Kylie Jo Soto	
Stage Manager Reinold Kellici	Reinold Kellici	
Master Electrician Connor Greene	Connor Greene	
Programmer/Assoc LD Chris Mason	Chris Mason	

ARIZONA REPERTORY THEATRE  
MARRONEY THEATRE

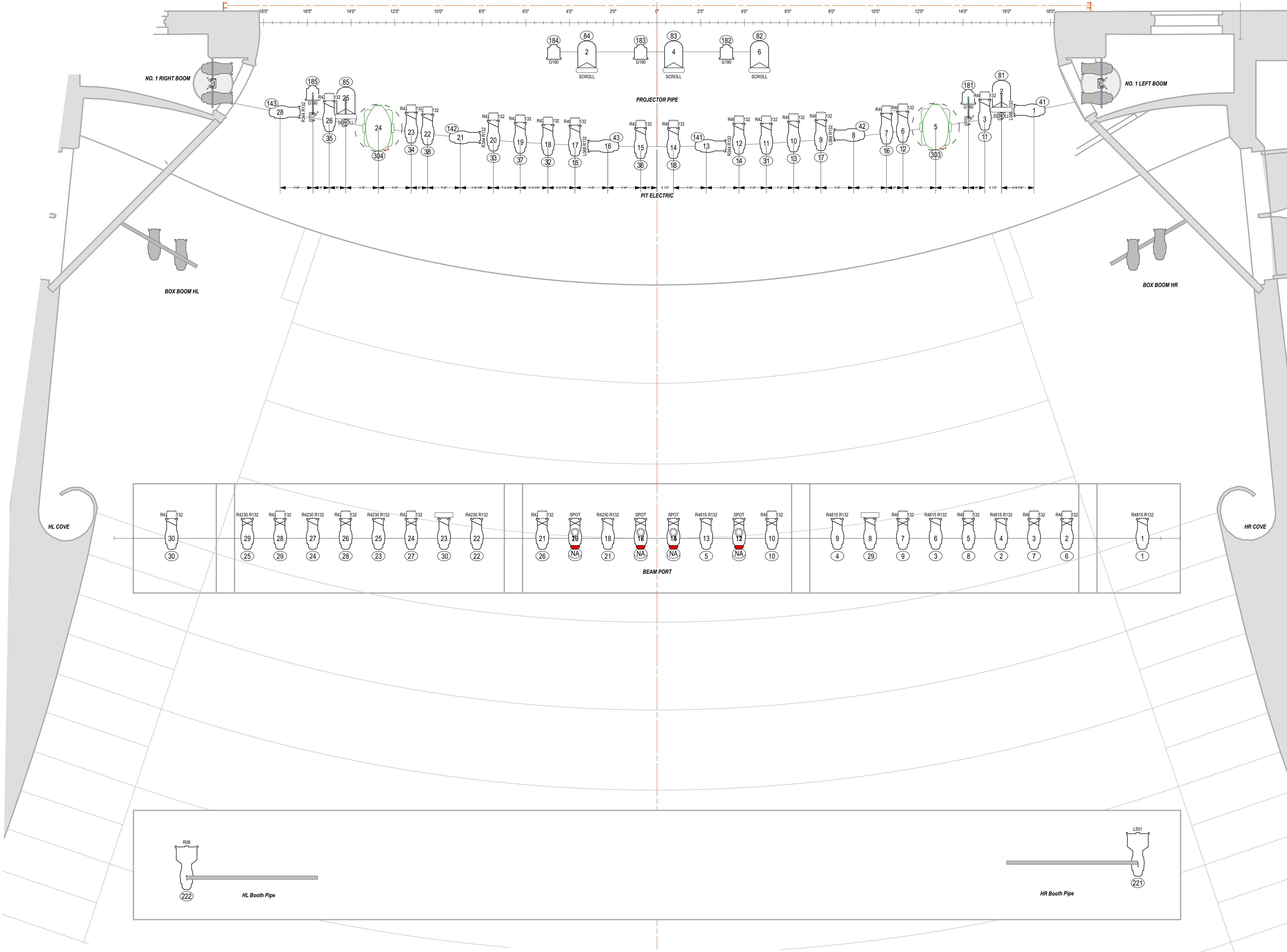
DRAWING SCHEDULE		
Version	DESCRIPTION	DATE
V1	PLOT DUE DATE	9.15.18
Empty	Empty	XX.XX.XX
Empty	Empty	XX.XX.XX
Empty	Empty	XX.XX.XX
Empty	Empty	XX.XX.XX
Empty	Empty	XX.XX.XX
Empty	Empty	XX.XX.XX

SCALE: 1/2"=1'  
COPYRIGHTED  
DATE: 09.15.18  
DRAWN BY: TORI MAYS

PLATE  
1  
OF 4

ELECTRICS





SYMBOLS KEY		
	ETC Source 4 10 Degree	2/2
	ETC Source 4 19 Degree	10/17
	ETC Source 4 26 Degree	44/47
	ETC Source 4 36 Degree	29/36
	Par WFL	18/4?
	VL 1000	2/2
	ETC Revolution	2/3
	ETC Selador	12/12
	GLP 4Sx	2/2
	High End Studio Beam	2/2
	High End X-Spot	2/2
	Colortran 30 Degree	2/2
	Colortran Zoom	2/2
	Selecon (Dance) Fresnel	2/2
	Altman Sky CYC Cell	6/6
	Side Arm	
	Top Hat	
	Chroma Q Scroller (Rock and Roll Scroller)	
	Apollo Scroller (Stomp Scroller)	
	Wybron Forerunner Scroller (Wybron 2 Scroller)	

NOTES

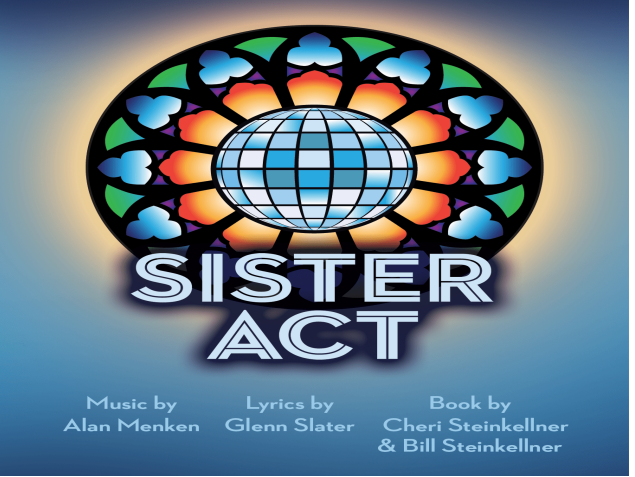
- All lights are on 18" centers unless otherwise noted
- Practicals are TBD with scenic and lighting designer
- Mirror Ball placement is still TBD
- Trim may be adjusted in space
- Please confirm circuiting with design, she can add two-fers as needed
- All gobos are A Size
- Revolutions need shutter module and three matching gobos

	Color
	Accessory
	Iris/Template
	Unit Number
	Gobos
	Channel

This drawing represents a lighting design that is wholly owned by the designer. Any use or distribution of the drawing without explicit permission by designer is prohibited and is a violation of copyright laws in the United States of America and Internationally. Any unauthorized distribution or use will result in legal action on behalf of the designer.

This drawing represents visual concepts and suggested construction and future placement only. It does not replace the knowledge and advice of a licensed structural engineer. The Designer is not responsible for determining the structural or electrical appropriateness of this design, and will not assume responsibility for improper engineering, construction, handling, or use. All materials and construction must comply with the most stringent applicable Federal and Local Fire, Safety, Energy, and Environmental Codes.

**Tori Mays** Lighting Design



Produced By:  
Arizona Repertory Theatre

Director: Jenny Kerr  
Production Manager: Jenny Lang  
Scenic Designer: Jason Jamerson  
Costume Designer: Ryan Moore  
Lighting Designer: Tori Mays  
Sound Designer: Matt Marcus  
Stage Manager: Kylie Jo Soto  
Master Electrician: Reinold Kellici  
Programmer/Assoc LD: Connor Greene  
ALD: Chris Mason

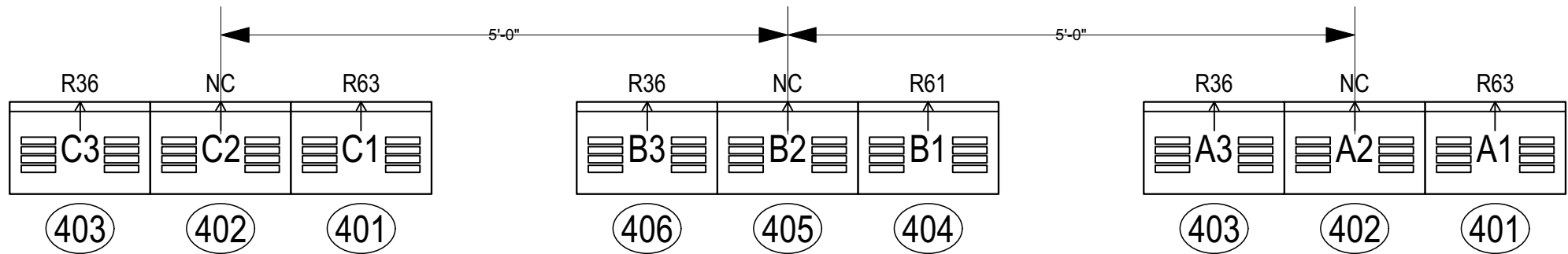
ARIZONA REPERTORY THEATRE  
MARRONEY THEATRE

DRAWING SCHEDULE		
Version	DESCRIPTION	DATE
V1	PLOT DUE DATE	9.15.18
Empty	Empty	XX.XX.XX
Empty	Empty	XX.XX.XX
Empty	Empty	XX.XX.XX
Empty	Empty	XX.XX.XX
Empty	Empty	XX.XX.XX
Empty	Empty	XX.XX.XX

SCALE: 1/2"=1'	PLATE
DATE: 09.15.18	2
DRAWN BY: TORI MAYS	OF 4

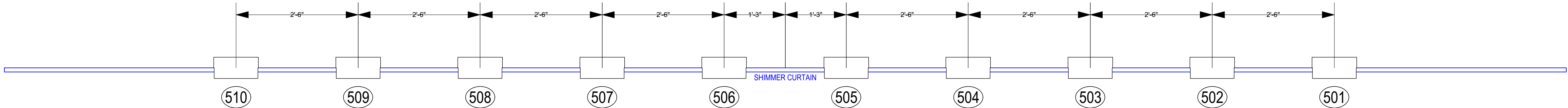
FOH





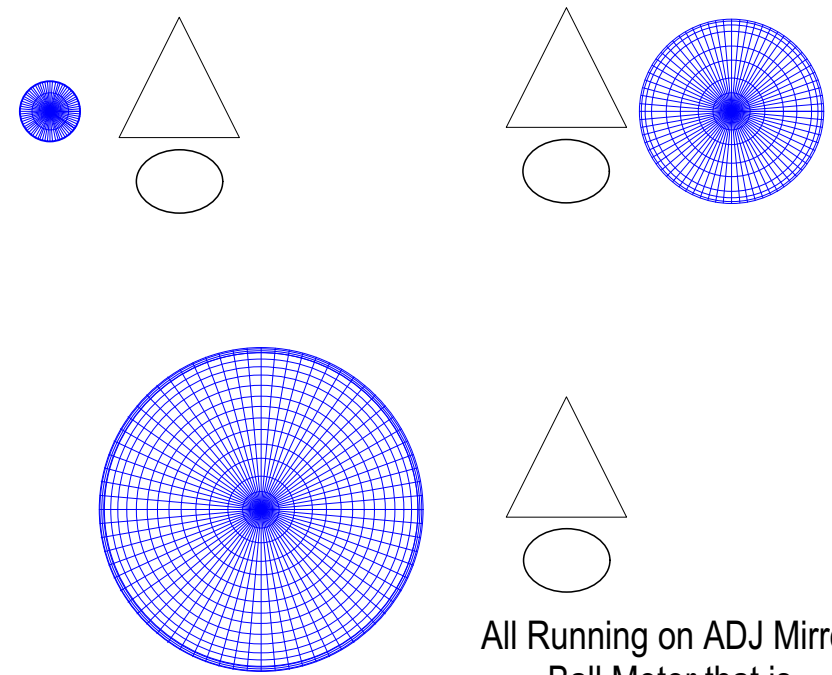
GROUND ROW

Placed at the edge of the 3'-0" cross over measurement point from the US Wall of the theare.  
Measured from Center Line



SHIMMER CURTAIN

Hung on the Batten from center with the curtain. Waiting Approval from TD



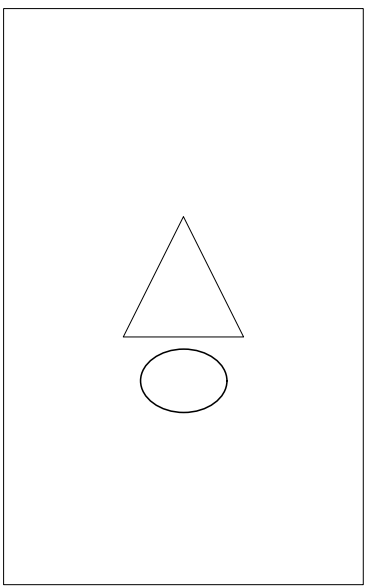
MIRROR BALLS

Location still TBD



TV

TBD



JUKE BOX

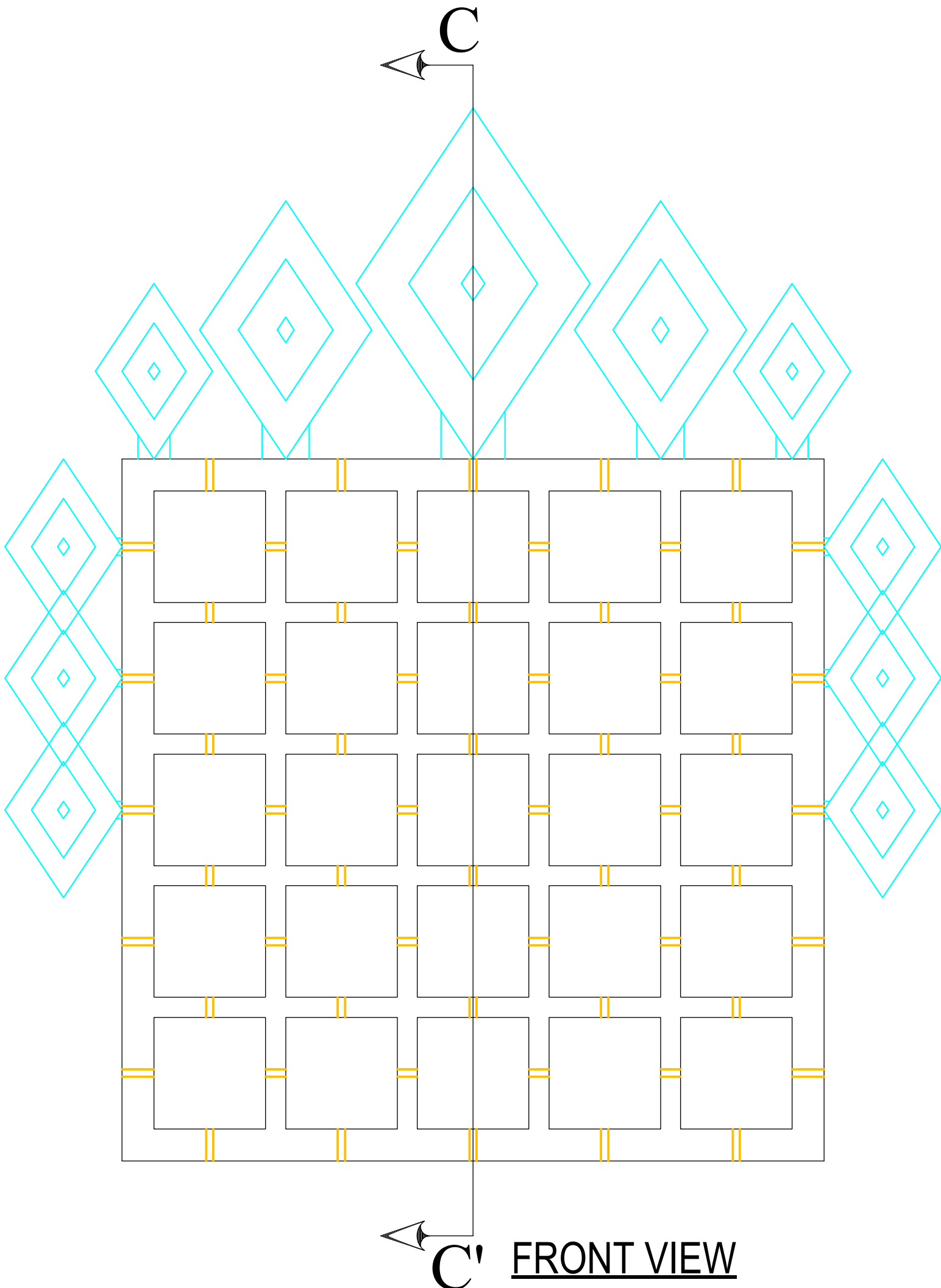
A 100w Light bulb with a circuit running offstage.  
Cable will be seen by audience.



SIDE VIEW

CURTIS CLUB HANGER

All 25 squares lined with LED tape. Each square individually controllable.  
R216 Diffusion on the front panel and muslin on the back .



FRONT VIEW

SYMBOLS KEY		
	ETC Source 4 10 Degree	2/?
	ETC Source 4 19 Degree	10/17
	ETC Source 4 26 Degree	44/47
	ETC Source 4 36 Degree	29/36
	Par WFL	18/4?
	VL 1000	2/2
	ETC Revolution	2/3
	ETC Selador	12/12
	GLP 4Sx	2/2
	High End Studio Beam	2/2
	High End X-Spot	2/2
	Colortran 30 Degree	2/2
	Colortran Zoom	2/2
	Selecon (Dance) Fresnel	2/2
	Altman Sky CYC Cell	6/6
	Side Arm	
	Top Hat	
	Chroma Q Scroller (Rock and Roll Scroll)	
	Apollo Scroller (Stomp Scroll)	
	Wybron Forerunner Scroller (Wybron 2 Scroll)	

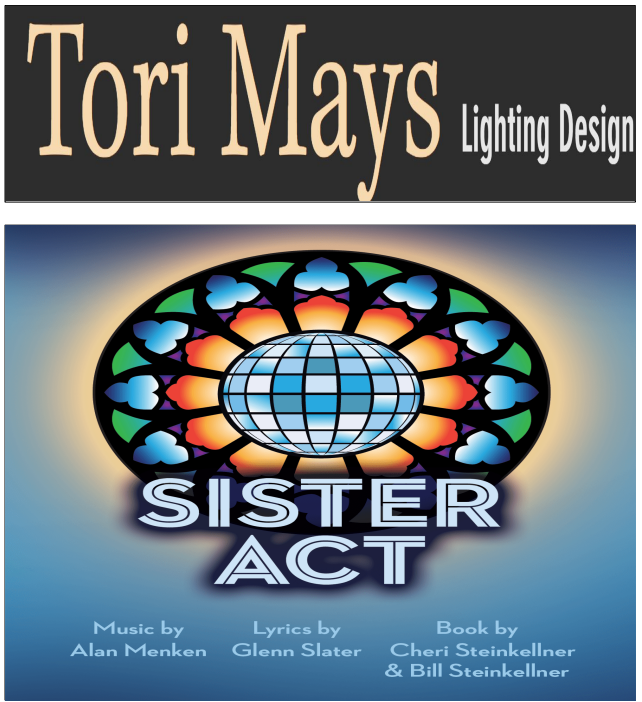
NOTES

- All lights are on 18" centers unless otherwise noted
- Practicals are TBD with scenic and lighting designer
- Mirror Ball placement is still TBD
- Trim may be adjusted in space
- Please confirm circuiting with design, she can add two-fers as needed
- All gobos are A Size
- Revolutions need shutter module and three matching gobos

	Color
	Accessory
	Iris/Template
	Unit Number
	Zoom
	Channel

This drawing represents a lighting design that is wholly owned by the designer. Any use or distribution of the drawing without explicit permission by designer is prohibited and is a violation of copyright laws in the United States of America and internationally. Any unauthorized distribution or use will result in legal action on behalf of the designer.

This drawing represents visual concepts and suggested construction and future placement only! It does not replace the knowledge and advice of a licensed structural engineer. The Designer is equalled to determine the structural or electrical appropriateness of this design, and will not assume responsibility for improper engineering, construction, handling, or use. All materials and construction must comply with the most stringent applicable Federal and Local Fire, Safety, Energy, and Environmental Codes.



Produced By: Arizona Repertory Theatre		
Director	Christie Kerr	
Production Manager	Jenny Lang	
Scenic Designer	Jason Jamerson	
Costume Designer	Ryan Moore	
Lighting Designer	Tori Mays	
Sound Designer	Matt Marcus	
Stage Manager	Kylie Jo Soto	
Master Electrician	Reinold Kellici	
Programmer/Assoc LD	Connor Greene	
ALD	Chris Mason	

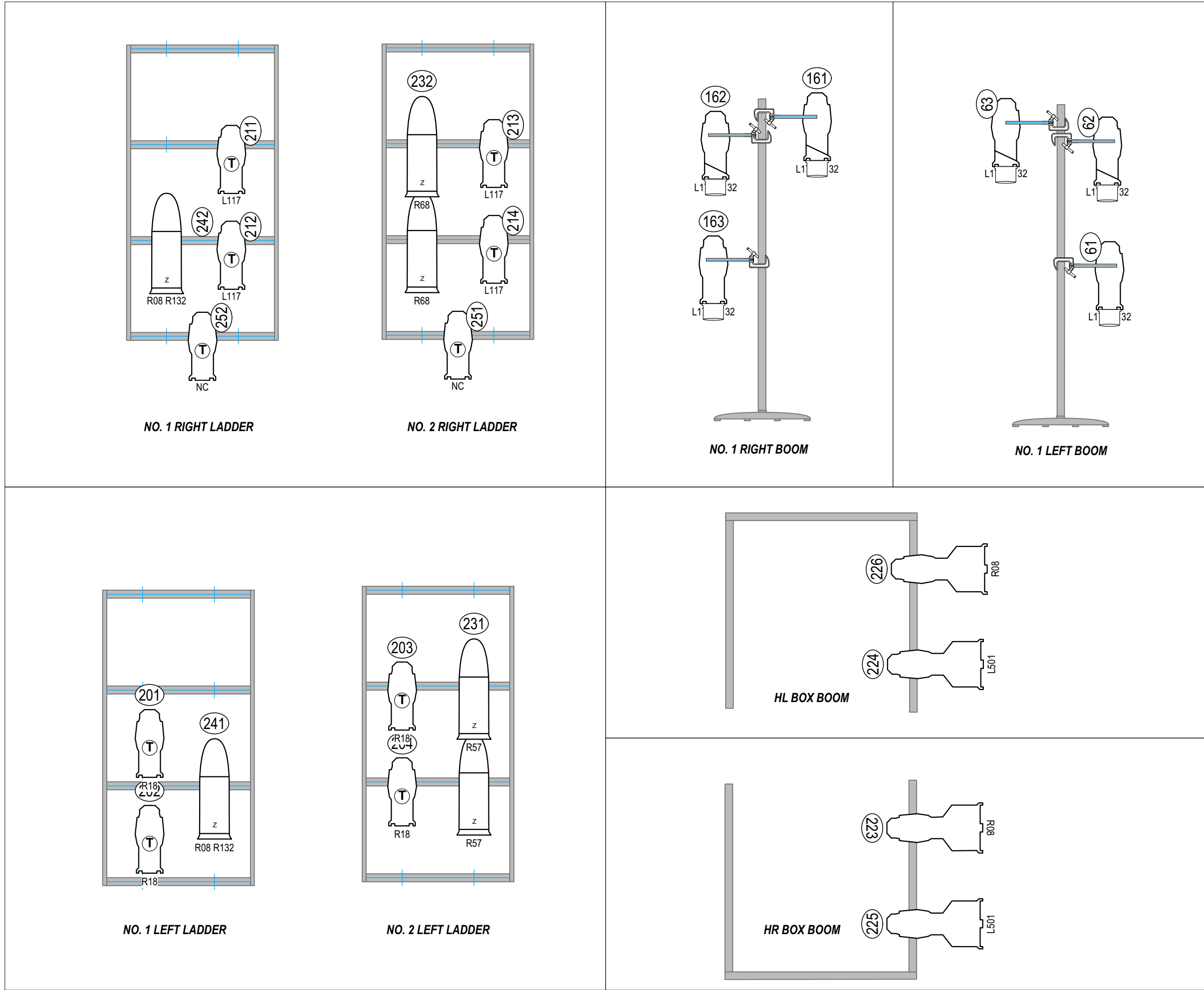
ARIZONA REPERTORY THEATRE  
MARRONEY THEATRE

DRAWING SCHEDULE		
Version	DESCRIPTION	DATE
V1	PLOT DUE DATE	9.15.18
Empty	Empty	XX.XX.XX
Empty	Empty	XX.XX.XX
Empty	Empty	XX.XX.XX
Empty	Empty	XX.XX.XX
Empty	Empty	XX.XX.XX

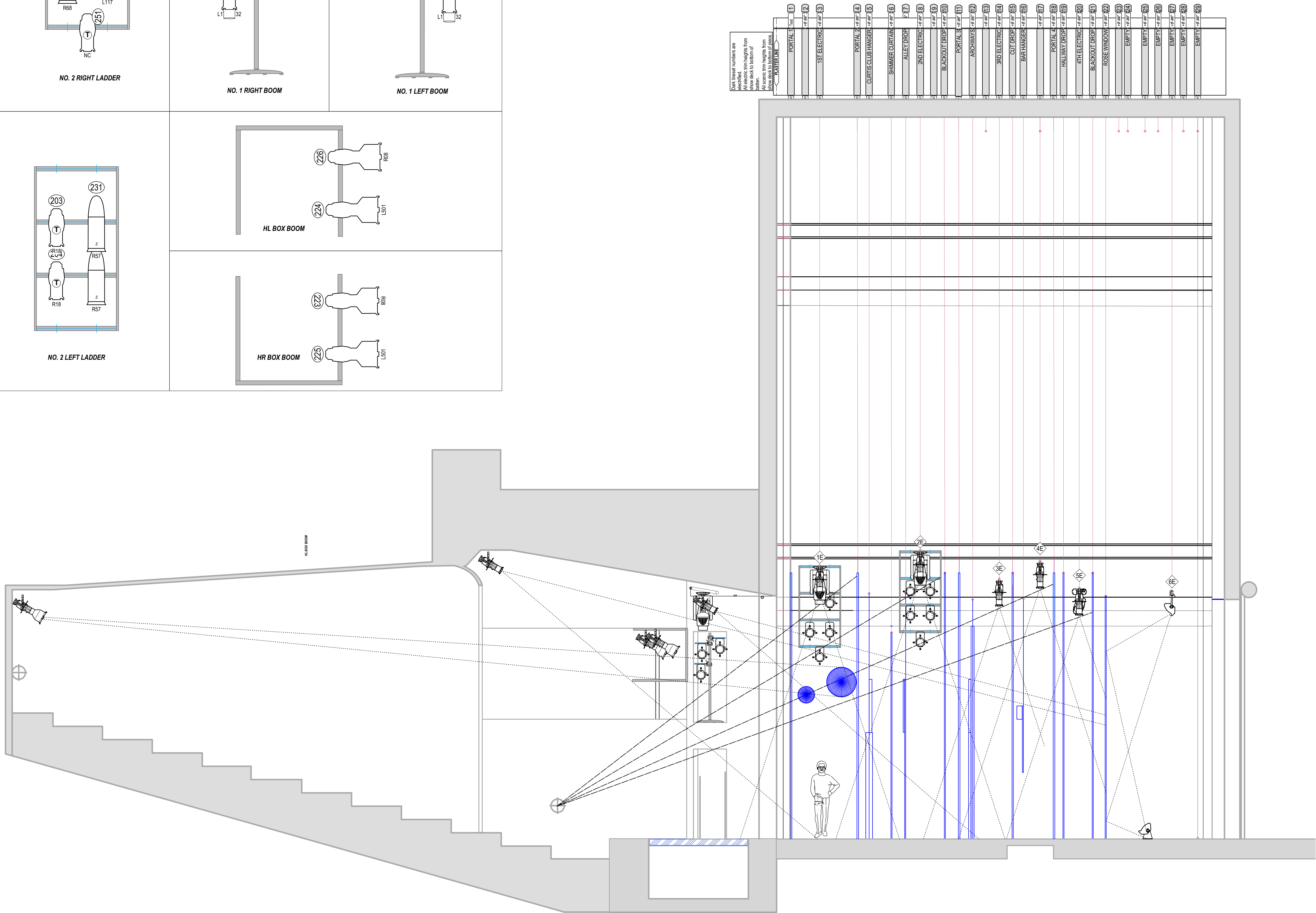
SCALE: 3/4"=1'	PLATE
DATE: 09.15.18	3
DRAWN BY: TORI MAYS	OF 4

SET ELECTRICS





Section in 1/4"=1' Scale



SYMBOLS KEY		
	ETC Source 4 10 Degree	2/2
	ETC Source 4 19 Degree	10/17
	ETC Source 4 26 Degree	44/47
	ETC Source 4 36 Degree	29/36
	Par WFL	18/4?
	VL 1000	2/2
	ETC Revolution	2/3
	ETC Selador	12/12
	GLP 4Sx	2/2
	High End Studio Beam	2/2
	High End X-Spot	2/2
	Colortran 30 Degree	2/2
	Colortran Zoom	2/2
	Selecon (Dance) Fresnel	2/2
	Altman Sky CYC Cell	6/6

- Side Arm
- Top Hat
- Chroma Q Scroller (Rock and Roll Scroll)
- Apollo Scroller (Stomp Scroll)
- Wybron Forerunner Scroller (Wybron 2 Scroll)

**NOTES**

-All lights are on 18" centers unless otherwise noted

-Practicals are TBD with scenic and lighting designer

-Mirror Ball placement is still TBD

-Trim may be adjusted in space

-Please confirm circuiting with design, she can add two-fers as needed

-All gobos are A Size

-Revolutions need shutter module and three matching gobos

	Color
	Accessory
	Iris/Template
	Unit Number
	Zoom
	Channel

This drawing represents a lighting design that is wholly owned by the designer. Any use or distribution of this drawing without explicit permission by designer is prohibited and is a violation of copyright laws in the United States of America and internationally. Any unauthorized distribution or use will result in legal action on behalf of the designer.

This drawing represents visual concepts and suggested construction and future placement only. It does not replace the knowledge and advice of a licensed structural engineer. The Designer is not responsible for determining the structural or electrical appropriateness of this design, and will not assume responsibility for improper engineering, construction, handling, or use. All materials and construction must comply with the most stringent applicable Federal and Local Fire, Safety, Energy, and Environmental Codes.

**Tori Mays** Lighting Design

**SISTER ACT**

Music by Alan Menken Lyrics by Glenn Slater Book by Cheryl Shickelbauer & Bill Steinkellner

Produced By:  
Arizona Repertory Theatre

Director	Christie Kerr
Production Manager	Jenny Lang
Scenic Designer	Jason Jamerson
Costume Designer	Ryan Moore
Lighting Designer	Tori Mays
Sound Designer	Matt Marcus
Stage Manager	Kylie Jo Soto
Master Electrician	Reinold Kellici
Programmer/Assoc LD	Connor Greene
ALD	Chris Mason

ARIZONA REPERTORY THEATRE  
MARRONEY THEATRE

DRAWING SCHEDULE		
Version	DESCRIPTION	DATE
V1	PLOT DUE DATE	9.15.18
Empty	Empty	XX.XX.XX
Empty	Empty	XX.XX.XX
Empty	Empty	XX.XX.XX
Empty	Empty	XX.XX.XX
Empty	Empty	XX.XX.XX

SCALE: 1/2"=1'  
DATE: 09.15.18  
DRAWN BY: TORI MAYS

PLATE  
4  
OF 4

SECTION